

## Information on demo version of StableNet CMC-TC



StableNet CMC-TC is a plug-in for HP OpenView with which Rittal CMC-TC units can be managed in a comfortable way. Sensor values like temperature and humidity are directly polled by SNMP. If CMC-TC sends a trap to the manager station it is received by HP OpenView and transmitted to StableNet CMC-TC.

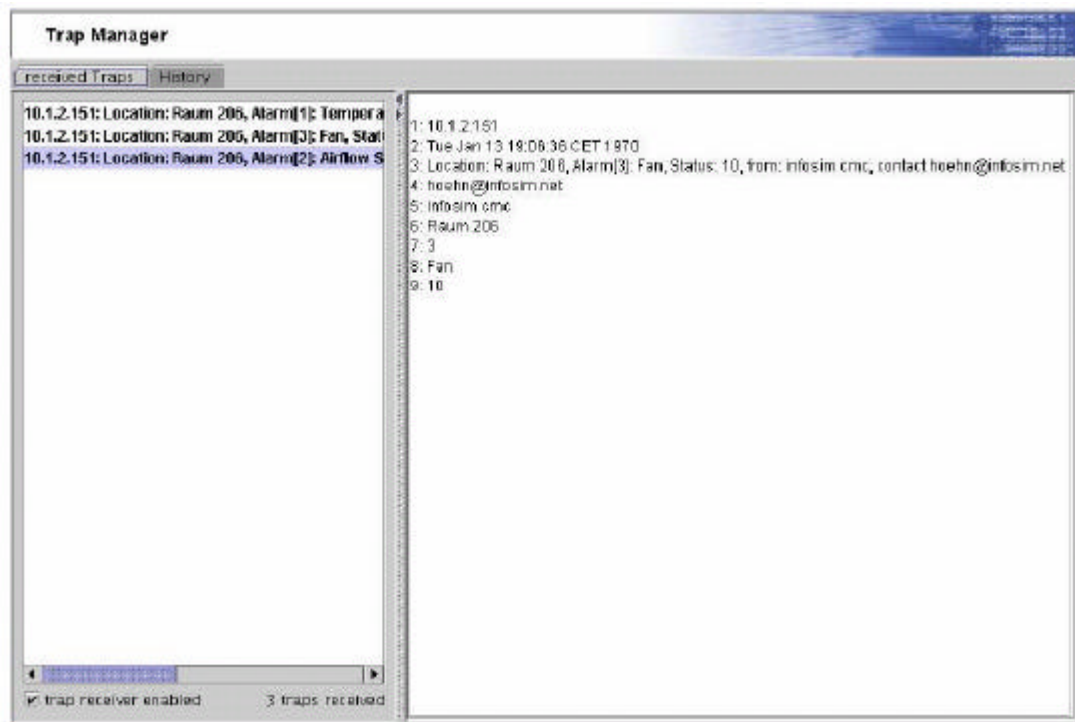
With the demo version you are able to test all functions of StableNet CMC-TC. Demo versions can merely manage one CMC-TC. With a respective full version you can manage as many CMC-TCs as you want.

You can download the demo version of StableNet CMC-TC under <http://www.cmc-tc.com> in the download sector. Then you can install the program by starting the file CMCInstaller.exe.

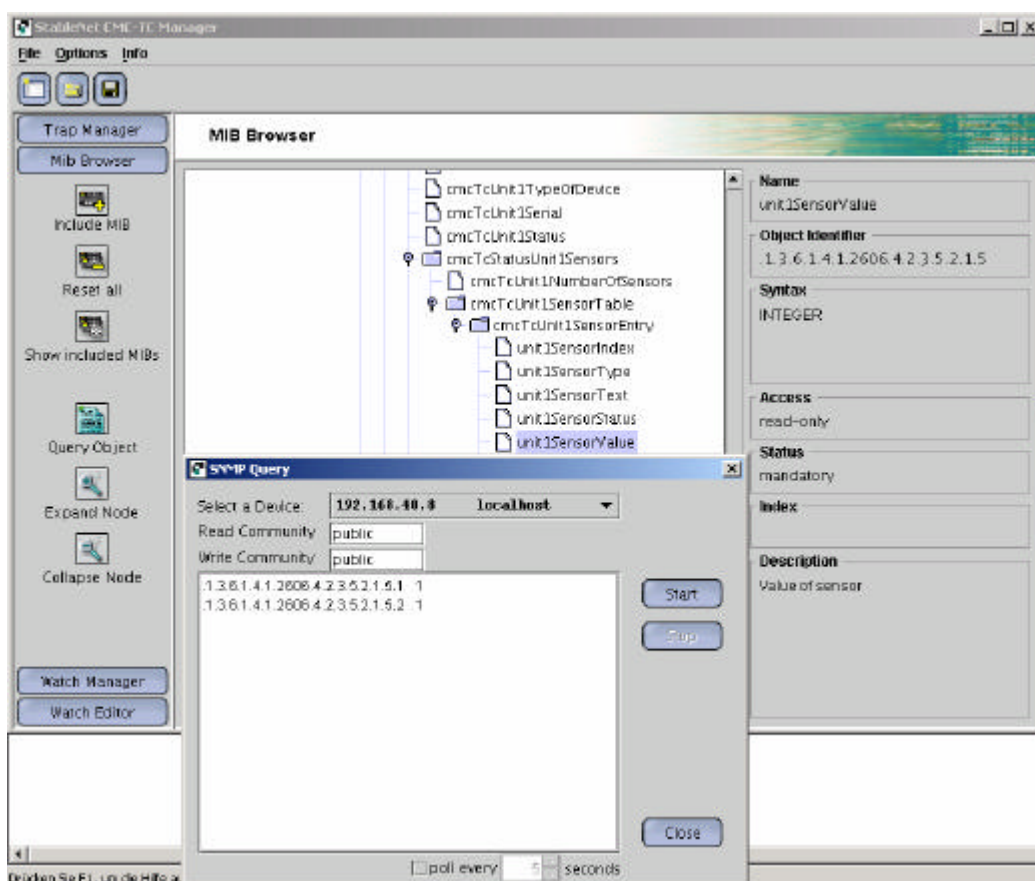
You will find detailed information about installation and operating in our operating instructions. The operating instructions are available for download in English language on our homepage. See download sector under StableNet CMC-TC, column "English", pdf file.

The following illustrations show a short survey of the main functions of StableNet CMC-TC

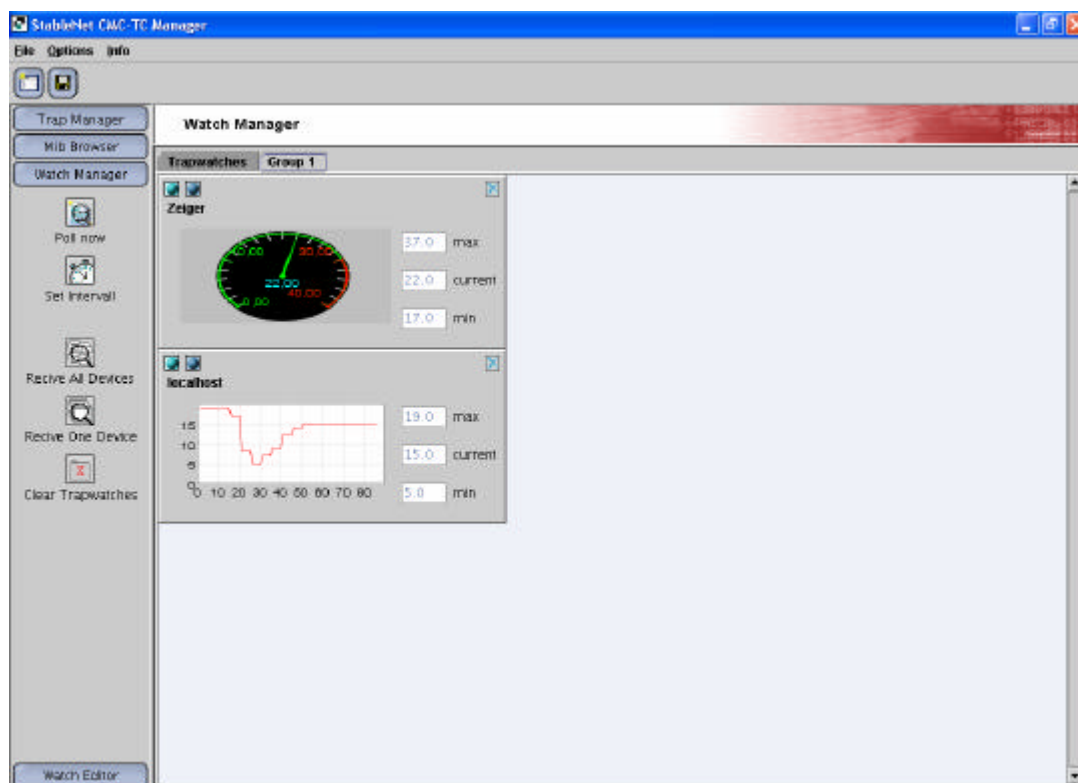
The Trap Manager of StableNet CMC-TC clearly arranges the received traps from all CMC-TC units.



The MIB variables can be polled by means of the MIB Browser.



The Watch Manager displays any MIB variables in different ways.



StableNet CMC-TC is able to read out the configuration of CMC-TC units autonomously and to display the most important values.

